

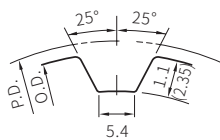
RoHS



Type	皮帶寬度			材質		處理	附屬品 固定螺絲材質
	15.0mm AT10150	20.0mm AT10200	25.0mm AT10250	皮帶輪	法蘭		
BBSW	○	○	○	鋁合金	鋁合金	白陽極	SUS304
BBST	○	○	○			黑陽極	
BBSF	○	○	○			硬陽極	
BBSM	○	○	○			無電解鍍	

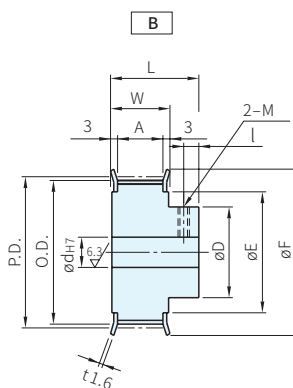
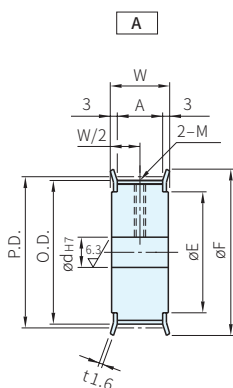
攻牙孔尺寸表

(軸孔:P·N)



(Pitch=10.0mm)

d _{H7} 軸孔內徑	M 粗螺紋	附屬品 固定螺絲
5	M3	M3
6~12	M4	M4
13~17	M5	M5
18~30	M6	M6
31~45	M8	M8
46~70	M10	M10



l=8(齒數14~48)

齒數

mm	14	15	16	18	20	22	24	25	26	28	30	32	36	40	44	48
P.D.	44.56	47.75	50.93	57.30	63.66	70.03	76.39	79.58	82.75	89.13	95.49	101.86	114.59	127.32	140.06	152.79
O.D.	42.70	45.90	49.05	55.45	61.80	68.15	74.55	77.70	80.90	87.25	93.65	100.00	112.75	125.45	138.20	150.95
D	34	35	35	35	40	40	50	50	50	60	60	60	60	60	60	60
F	52	58	58	61	67	80	87	87	87	95	104	111	123	135	152	160
E	36	40	40	45	50	60	67	67	67	75	84	90	102	115	130	140
l	8	8	8	8	8	8	8	8	8	8	8	8	8	8	8	8

Wa) 注意

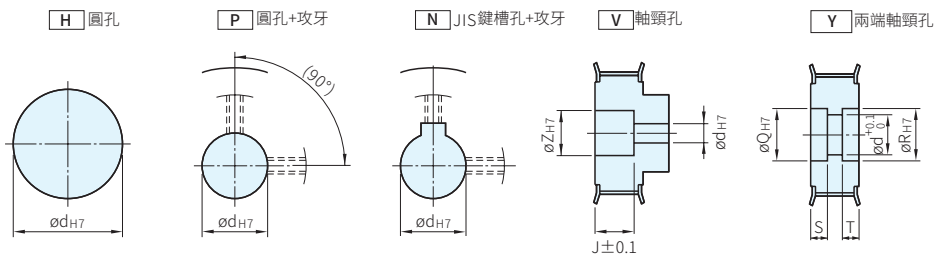
· 軸孔規格為P、N時，附攻牙孔和固定螺絲

軸孔規格

- 請從下表選出軸孔規格符號與各尺寸
- 軸孔內有可能沒有做表面處理

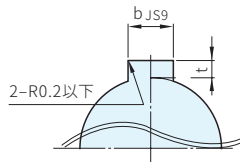
皮帶寬度

mm	No.		
	AT10150	AT10200	AT10250
A	16.5	21.5	26.5
W	22.5	27.5	32.5
L 齒數14~28	38.0	43.0	48.0
L 齒數30~48	40.0	45.0	50.0



鍵槽尺寸表

軸孔			鍵槽			
規格	軸孔	公差	b	js9	t	公差
N	8	+0.015 0	3	±0.0125	1.4	+0.1 0
N	10	+0.018 0	4	±0.0150	1.8	
N	11~12		5		2.3	
N	13~17		6		2.8	
N	18	+0.021 0	6	±0.0150	3.3	
N	19~22		8			
N	23~30	+0.025 0	8	±0.0180	3.3	
N	31		10			



型式			皮帶輪 形狀	皮帶輪形狀														
				A						B								
Type	齒數	皮帶 寬度 No.		(~)指定單位1mm						(~)指定單位1mm								
				H	P	N	V			Y			H	P	N	V		
				d	d	d	d	Z	J 0.1mm	Y	Q·R	S·T 0.1mm	d	d	d	d	Z	J 0.1mm
BBSW BBST BBSF BBSM	14	AT10150	A	10-32	10-26	10-26	10-30	12-32	3.0 ≤ J ≤ W-3.0	10-30	12-32	3~17 S+T ≤ W-3	10-30	10-24	10-18	10-28	12-30	3.0 ≤ J ≤ L-3.0
	15			10-33	10-26	10-26	10-31	12-33		10-31	12-33		10-31	10-25	10-20	10-29	12-31	
	16			12-36	12-30	12-30	12-34	14-36		12-34	14-36		12-31	12-25	12-20	12-29	14-31	
	18			12-41	12-30	12-30	12-39	14-41		12-39	14-41		12-31	12-25	12-20	12-29	14-31	
	20			12-46	12-40	12-40	12-44	14-46		12-44	14-46		12-36	12-30	12-25	12-34	14-36	
	22			12-56	12-48	12-48	12-54	14-56		12-54	14-56		12-36	12-30	12-25	12-34	14-36	
	24			12-63	12-50	12-50	12-61	14-63		12-61	14-63		12-46	12-38	12-32	12-44	14-46	
	25			12-63	12-50	12-50	12-61	14-63		12-61	14-63		12-46	12-38	12-32	12-44	14-46	
	26			12-63	12-50	12-50	12-61	14-63		12-61	14-63		12-46	12-38	12-32	12-44	14-46	
	28			12-68	12-57	12-55	12-66	14-68		12-66	14-68		12-55	12-45	12-40	12-53	14-55	
	30			12-76	12-65	12-55	12-74	14-76		12-74	14-76		12-55	12-45	12-40	12-53	14-55	
	32			20-80	20-70	20-55	20-80	22-82		20-80	22-82		20-55	20-45	20-40	20-53	20-55	
	36			20-85	20-70	20-55	20-85	22-94		20-85	22-94		20-55	20-45	20-40	20-53	20-55	
	40			20-85	20-70	20-55	20-85	22-95		20-85	22-95		20-55	20-45	20-40	20-53	20-55	
44	20-85	20-70	20-55	20-85	22-95	20-85	22-95	20-55	20-45	20-40	20-53	20-55						
48	20-85	20-70	20-55	20-85	22-95	20-85	22-95	20-55	20-45	20-40	20-53	20-55						

訂貨： - - - - - - - - 交期: 天

(軸孔規格:H·P·N) BBSW24AT10150 - A - H10

(軸孔規格:V) BBSW30AT10200 - B - V20 - Z30 - J20.0

(軸孔規格:Y) BBSW30AT10250 - A - Y25 - Q37 - R37 - S7 - T7